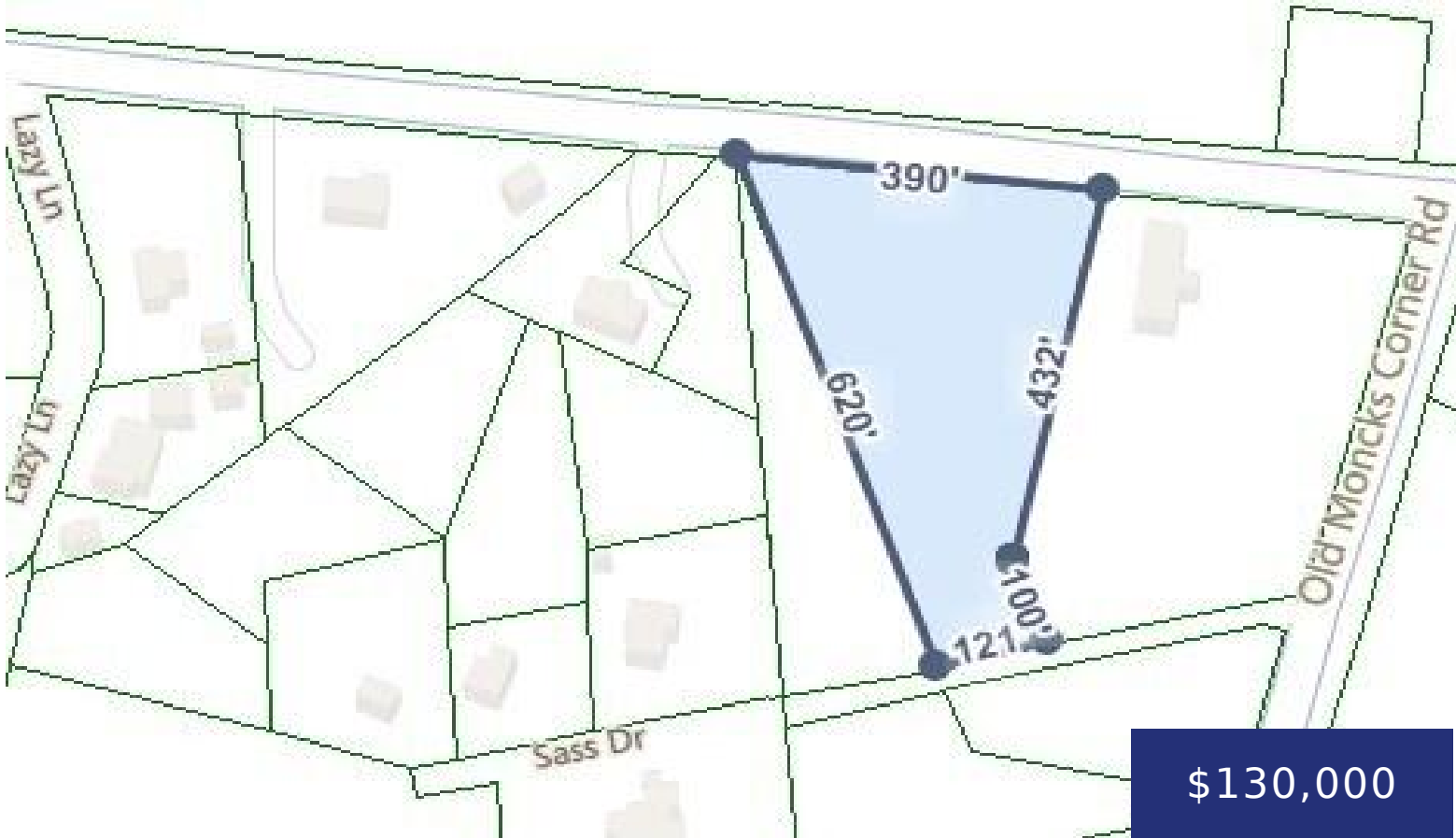


539 OLD MONCKS CORNER RD, GOOSE CREEK, SC
29445, USA

<https://findyourcharleston.com>

539 Old Moncks
Corner Rd, Goose
Creek, SC 29445,
USA



\$130,000

Beautiful, nearly 3 acre parcel is ready for your custom home! With .16 acre of high area at Sass Dr and almost three acres of wooded, undisturbed wetlands as your backyard, you'll enjoy plenty of space and privacy to enjoy the great outdoors!

- Land
- Active



Jason Wang

Basics



MLS ID: 25002353

Category: Land

Lot size, acres: 2.95 acres

County Or Parish: Berkeley

Date added: Added 9 months ago

Status: Active

Subdivision Name: None

MLS Area Major: 73 - G. Cr./M. Cor. Hwy 17A-Oakley-Hwy 52

Amenities & Features

Sewer: Sewer At Site

Hidden Info

List Office MLS Id: 9439

