

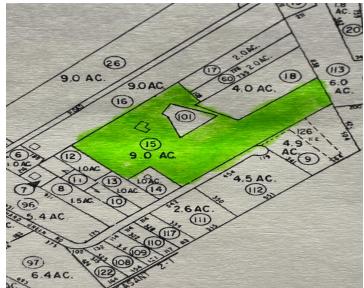
1274 CHANDLER RD, AWENDAW, SC 29429, USA

<https://findyourcharleston.com>

1274 Chandler Rd,
Awendaw, SC
29429, USA



\$2,700,000



GREAT OPPORTUNITIES FOR DEVELOPER BUILDERS OR LAND INVESTORS. NINE ACRES CLOSE TO WATER LINES ALONG BOTH CHANDLER AND PRITCHARD, STORM DRAINS EXIST, USE SEPTIC, CURRENT ZONING RR. COME WITH YOUR OFFER . CLOSE TO WANDO RIVER LANDING, AND CLOSE TO MOUNT PLEASANT AMENITIES AND RSF HOSPITAL. MINUTES TO DOWNTOWN CHARLESTON AND THE BEACH ISLANDS OF [...]

- Land
- Active



Bill Hand



Basics

MLS ID: 24006191

Date added: Added 6 months ago

Category: Land

Status: Active

Lot size, acres: 9.1 acres

Subdivision Name: Chandlers

County Or Parish: Charleston

MLS Area Major: 41 - Mt Pleasant N of IOP Connector

Hidden Info

List Office MLS Id: 1760

