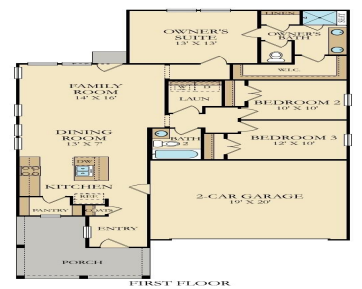




\$347,455



The Palmetto - a perfect cottage feel! If you are downsizing or in need of a one story home this may be the plan for you! Large foyer leading to an open kitchen with island and walk in pantry with window. Dining space just off the kitchen is also open to the family room. Split [...]

- 3 beds
- 2 baths
- Single Family Detached
- Residential
- Active
- 1430 sq ft



Aimee Spencer

Basics



**MLS ID:** 25014688  
**Category:** Residential  
**Status:** Active  
**Bathrooms:** 2 baths  
**Lot size, acres:** 0.12 acres  
**Subdivision Name:** Summers Corner  
**MLS Area Major:** 63 - Summerville/Ridgeville

**Date added:** Added 6 months ago  
**Type:** Single Family Detached  
**Bedrooms:** 3 beds  
**Area, sq ft:** 1430 sq ft  
**Year built:** 2025  
**County Or Parish:** Dorchester

---

## Building Details

<b>Stories:</b> 1	<b>New Construction Yes/ No:</b> 1
<b>Parking Features:</b> 2 Car Garage, Attached, Garage Door Opener	<b>Entry Location:</b> Ground Level
<b>Covered Spaces:</b> 2	<b>Construction Materials:</b> Vinyl Siding
<b>Garage Spaces:</b> 2	<b>Roof:</b> Architectural

---

## Amenities & Features

<b>Water Source:</b> Public	<b>Patio &amp; Porch Features:</b> Covered, Front Porch
<b>Architectural Style:</b> Cottage, Ranch	<b>Sewer:</b> Public Sewer
<b>Cooling Yes/ No:</b> 1	<b>Cooling:</b> Central Air
<b>Attached Garage Yes/ No:</b> 1	<b>Interior Features:</b> Ceiling - Smooth, High Ceilings, Kitchen Island, Walk-In Closet(s), Entrance Foyer, Pantry
<b>Heating:</b> Forced Air, Natural Gas	<b>Flooring:</b> Carpet, Ceramic Tile, Luxury Vinyl

---

## Hidden Info

**List Office MLS Id:** 1507

