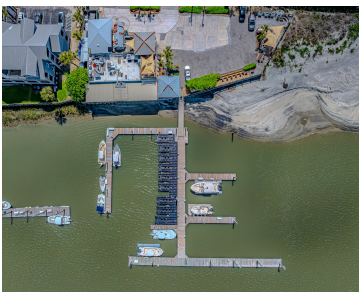


# 101 PALM BLVD, ISLE OF PALMS, SC 29451, USA

<https://findyourcharleston.com>

101 Palm Blvd, Isle of Palms, SC 29451, USA



Jet Dock designed for 18' boat up to 2,000 lbs. Perfectly situated between Sullivan's Island and the Isle of Palms, the Two Island Marina is located behind The Boathouse on Breach Inlet. Quick access to the ICW, Charleston Harbor, & Atlantic Ocean. The docks are completely rebuilt with all new timber framing, floats, decking, plumbing, [...]

- Land
- Active



Matthew Deantonio

## Basics



**MLS ID:** 25005357

**Category:** Land

**Lot size, acres:** 0 acres

**County Or Parish:** Charleston

**Date added:** Added 7 months ago

**Status:** Active

**Subdivision Name:** None

**MLS Area Major:** 44 - Isle of Palms

## Amenities & Features

**Waterfront Features:** Beach Access, Marshfront, Tidal Creek, Waterfront - Deep

## Hidden Info

**List Office MLS Id:** 1046

