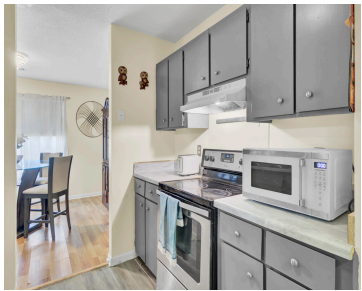
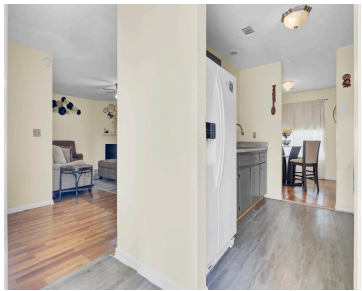


1108 GREENMEADOW DR, GOOSE CREEK, SC 29445, USA

https://findyourcharleston.com

1108
Greenmeadow Dr,
Goose Creek, SC
29445, USA



Discover a rare opportunity to own a serene ground-floor condo in one of Goose Creek’s most conveniently located communities—just minutes from the Base, Charleston Southern University, I-26, and Bushy Park boat landing. Tucked near the community entrance, this end unit offers unmatched ease of access and privacy. As you step inside, you’re greeted by a thoughtful [...]

- 2 beds
- 2 baths
- Single Family Attached
- Residential
- Active
- 1148 sq ft



Denise Rush



Basics



MLS ID: 25015854

Category: Residential

Status: Active

Bathrooms: 2 baths

Lot size, acres: 0 acres

Subdivision Name: Greenslake Condominiums

MLS Area Major: 72 - G.Cr/M. Cor. Hwy 52-Oakley-Cooper River

Date added: Added 6 months ago

Type: Single Family Attached

Bedrooms: 2 beds

Area, sq ft: 1148 sq ft

Year built: 1984

County Or Parish: Berkeley

Building Details

Stories: 1

Entry Location: Ground Level

Amenities & Features

Water Source: Public

Sewer: Public Sewer

Waterfront Features: Pond

Heating: Central, Electric

Fireplace Features: One

Patio & Porch Features: Patio, Screened

Cooling Yes/ No: 1

Cooling: Central Air

Flooring: Laminate

Hidden Info

List Office MLS Id: 8921

