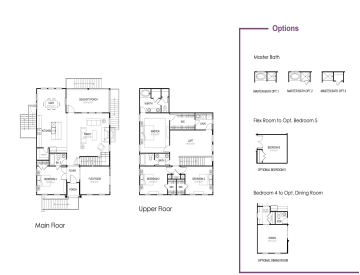


1410 ORDINANCE PT, CHARLESTON, SC 29412, USA

https://findyourcharleston.com

1410 Ordinance Pt,
Charleston, SC
29412, USA



Build Your Dream Home on Over One-Third Acre of Waterfront Bliss on James IslandIntroducing the "Kennedy" by Hunter Quinn Homes, an elevated 4-bedroom, 3-bathroom design spanning 2,540 sq ft, thoughtfully crafted for modern Lowcountry living. Highlights include a downstairs office, private guest suite, spacious loft, and an open-concept floor plan with a large kitchen island-perfect [...]

- 4 beds
- 3 baths
- Single Family Detached
- Residential
- Active
- 2540 sq ft



Basics



MLS ID: 25018815

Category: Residential

Status: Active

Bathrooms: 3 baths

Lot size, acres: 0.34 acres

Subdivision Name: Fort Lamar

MLS Area Major: 21 - James Island

Date added: Added 5 months ago

Type: Single Family Detached

Bedrooms: 4 beds

Area, sq ft: 2540 sq ft

Year built: 2025

County Or Parish: Charleston

Building Details

Stories: 2

Amenities & Features

Patio & Porch Features: Porch - Full Front

Waterfront Features: Marshfront, Tidal Creek

Architectural Style: Traditional

Interior Features: Kitchen Island, Walk-In Closet(s), Bonus, Eat-in Kitchen, Entrance Foyer, Loft, Office

Hidden Info

List Office MLS Id: 9026

