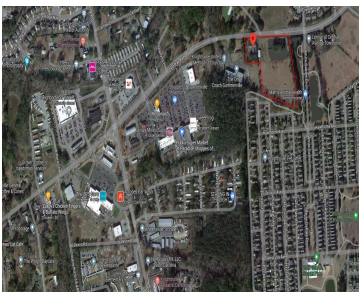


1501 CENTRAL AVE, SUMMERVILLE, SC 29483, USA

<https://findyourcharleston.com>

1501 Central Ave,
Summerville, SC
29483, USA



Development Potential! Located near the retail intersection of Central Avenue and Old Orangeburg Road in the heart of Knightsville- a growing suburb of Summerville. Great opportunity for a builder to develop a neighborhood. Surrounding population has increased 60% since 2000 and it's not stopping! Starbucks going in across the street soon! Land has a 3,100 [...]

- Land
- Active



Shawn Pillion

Basics



MLS ID: 23023724

Category: Land

Lot size, acres: 6.4 acres

County Or Parish: Dorchester

Date added: Added 1 year ago

Status: Active

Subdivision Name: None

MLS Area Major: 63 - Summerville/Ridgeville

Amenities & Features

Sewer: Septic At Site, Sewer At Site

Waterfront Features: Pond

Hidden Info

List Office MLS Id: 10432

