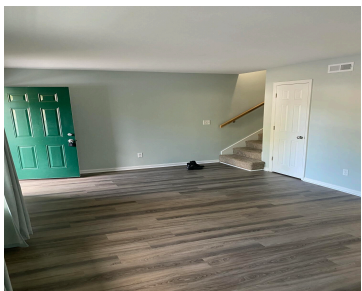


1515 NANTAHALA BLVD, MT PLEASANT, SC 29464, USA

<https://findyourcharleston.com>

1515 Nantahala Blvd, Mt Pleasant, SC 29464, USA



Available July 1! This lovely three bedroom townhouse features smooth ceilings, overhead ceiling fans/lights in all bedrooms, stone counters, and paneled white soft close cabinetry. Full front porch, nice sized family room with coat closet, huge storage closet in hallway, kitchen with stainless steel appliances, farmer sink, pantry and breakfast bar, separate dining area. laundry/mud [...]

- 3 beds
- 1 bath
- Residential Lease
- Active
- 1400 sq ft



Jim Algar

Basics



MLS ID: 25015217

Category: Residential Lease

Bedrooms: 3 beds

Half baths: 1 half bath

Year built: 1984

County Or Parish: Charleston

Date added: Added 8 months ago

Status: Active

Bathrooms: 1 bath

Area, sq ft: 1400 sq ft

Subdivision Name: Wando East

MLS Area Major: 42 - Mt Pleasant S of IOP Connector

Building Details

Stories: 2

Entry Location: Ground Level

Parking Features: Off Street

Amenities & Features

Water Source: Public

Architectural Style: Contemporary

Cooling Yes/ No: 1

Interior Features: Ceiling - Smooth, Walk-In Closet(s), Eat-in Kitchen, Family, Pantry

Furnished: Unfurnished

Fencing: Privacy, Fence - Wooden Enclosed

Patio & Porch Features: Patio, Porch - Full Front

Sewer: Public Sewer

Cooling: Central Air

Heating: Heat Pump

Flooring: Carpet, Luxury Vinyl

Hidden Info

List Office MLS Id: 8917

