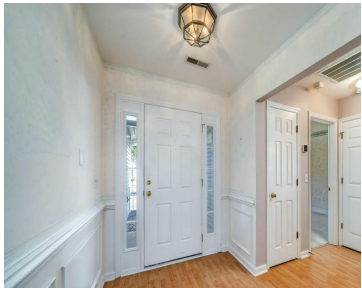
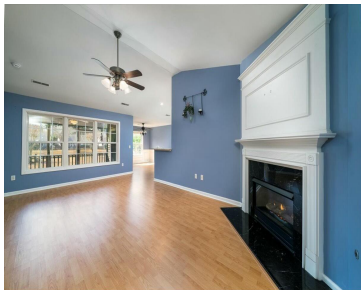


1529 WELLESLEY CIR, MT PLEASANT, SC 29466, USA

<https://findyourcharleston.com>

1529 Wellesley Cir,
Mt Pleasant, SC
29466, USA



Rare find in Mt. Pleasant, affordable ranch house with backyard pond in sought after Park West neighborhood. 3 bedrooms, a split floorpan with master bedroom facing towards the pond. Master has vaulted ceiling and expansive walk-in closet. The ensuite provides dual sinks and an updated step-in shower, rain shower head, and wand for easy cleanup. [...]



Joanne Brockway

- 3 beds
- 2 baths
- Single Family Detached
- Residential
- Active
- 1385 sq ft



Basics



MLS ID: 25005928

Category: Residential

Status: Active

Bathrooms: 2 baths

Area, sq ft: 1385 sq ft

Year built: 2001

County Or Parish: Charleston

Date added: Added 9 months ago

Type: Single Family Detached

Bedrooms: 3 beds

Half baths: 0 half baths

Lot size, acres: 0.15 acres

Subdivision Name: Park West

MLS Area Major: 41 - Mt Pleasant N of IOP Connector

Building Details

Stories: 1

Entry Location: Ground Level

Construction Materials: Vinyl Siding

Roof: Architectural

Parking Features: 2 Car Garage, Garage Door Opener

Covered Spaces: 2

Garage Spaces: 2

Amenities & Features

Water Source: Public

Architectural Style: Ranch

Exterior Features: Lawn Irrigation, Rain Gutters, Stoop

Waterfront Features: Pond

Cooling: Central Air

Heating: Electric, Forced Air

Fireplace Features: Gas Log, One

Patio & Porch Features: Patio, Screened, Porch

Sewer: Public Sewer

Cooling Yes/ No: 1

Window Features: Window Treatments

Interior Features: Walk-In Closet(s), Great

Flooring: Carpet, Ceramic Tile, Vinyl

Hidden Info

List Office MLS Id: 8254

