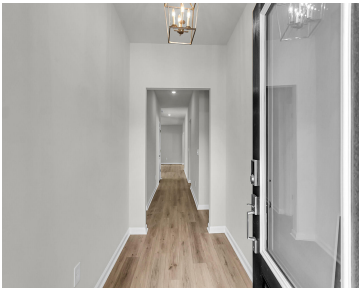




\$309,900



The Dorchester C has all the comforts you want and need, with a front porch, back covered porch and well-defined spaces. The Primary bedroom has a stunning tile walk-in shower with glass doors and a completely separate walk-in closet. Secondary bedrooms will accommodate a queen-sized bed or make a great office space. Secondary bathroom includes [...]

- 3 beds
- 2 baths
- Single Family Detached
- Residential
- Active
- 1677 sq ft



Jayne Harmon



Basics



MLS ID: 25012721
Category: Residential
Status: Active
Bathrooms: 2 baths
Lot size, acres: 0.17 acres
Subdivision Name: Deercreek Plantation
MLS Area Major: 88 - CLR - Lake Marion Area

Date added: Added 7 months ago
Type: Single Family Detached
Bedrooms: 3 beds
Area, sq ft: 1677 sq ft
Year built: 2025
County Or Parish: Clarendon

Building Details

Stories: 1
Parking Features: 2 Car Garage, Attached, Garage Door Opener
Construction Materials: Vinyl Siding
Roof: Fiberglass

New Construction Yes/ No: 1
Covered Spaces: 2
Garage Spaces: 2

Amenities & Features

Water Source: Public
Architectural Style: Cottage, Ranch, Traditional
Exterior Features: Lawn Irrigation
Cooling: Central Air
Interior Features: Ceiling - Smooth, High Ceilings, Kitchen Island, Walk-In Closet(s), Ceiling Fan(s), Eat-in Kitchen, Entrance Foyer, Great, Pantry
Flooring: Carpet, Ceramic Tile, Luxury Vinyl

Patio & Porch Features: Covered, Front Porch
Sewer: Public Sewer
Cooling Yes/ No: 1
Attached Garage Yes/ No: 1
Heating: Electric, Heat Pump

Hidden Info

List Office MLS Id: 1385

