

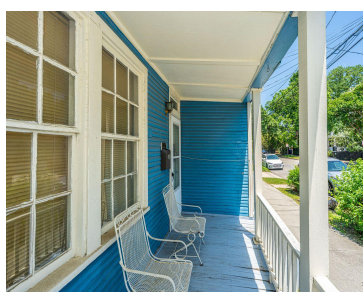
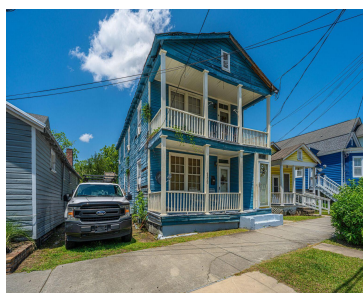
200 FISHBURNE ST, CHARLESTON, SC 29403, USA

<https://findyourcharleston.com>

200 Fishburne St,
Charleston, SC
29403, USA



\$910,000



Discover 200 Fishburne St - where Historic Charm meets with all the conveniences of living in beautiful Downtown Charleston. With some polish this duplex gem will sparkle. Located in the historic Westside neighborhood-this 2-unit property offers versatility. It presents a compelling opportunity for investors looking to enter or expand in the thriving Charleston rental market. [...]

- 6 beds
- Residential Income
- Active
- 1760 sq ft



Jacqui Swain

Basics



MLS ID: 25014917

Category: Residential Income

Bedrooms: 6 beds

Lot size, acres: 0.05 acres

Subdivision Name: Westside

MLS Area Major: 52 - Peninsula Charleston Outside of Crosstown

Date added: Added 6 months ago

Status: Active

Area, sq ft: 1760 sq ft

Year built: 1930

County Or Parish: Charleston

Building Details

Number Of Units Total: 2

Parking Features: Other

Roof: Metal

Stories: 2

Construction Materials: Wood Siding

Amenities & Features

Water Source: Public

Cooling Yes/ No: 1

Interior Features: Ceiling Fan(s)

Sewer: Public Sewer

Cooling: Window Unit(s)

Hidden Info

List Office MLS Id: 1194

