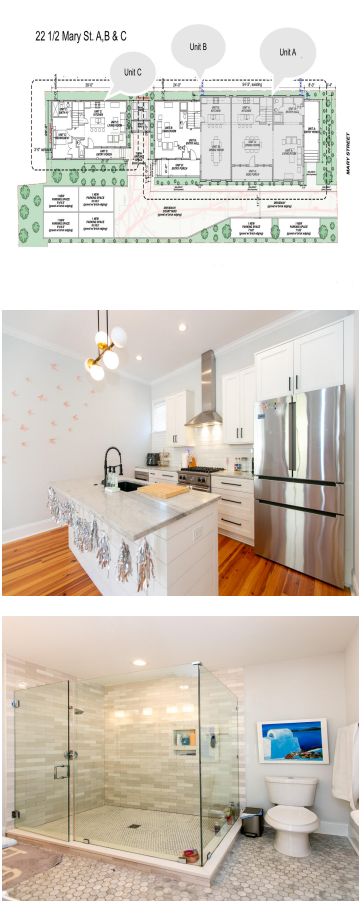


22 1/2 MARY ST, CHARLESTON, SC 29403, USA

https://findyourcharleston.com

22 1/2 Mary St,
Charleston, SC
29403, USA



Directly behind Wraggborough’s Aiken-Rhett house museum, in the shadow of Charleston’s future Union Pier waterfront development, this property was designed for high-efficiency, low maintenance and was completed in 2020. Three units with a combined 11 bedrooms/ 11 bath/half-baths rent unfurnished, long-term, for \$17,200/mo starting in August through July, 2026. 2024 expenses were \$39,222. New ownership [...]

- 11 beds
- Residential Income
- Active
- 6807 sq ft



Marion Jackson

Basics



MLS ID: 25003509

Category: Residential Income

Bedrooms: 11 beds

Lot size, acres: 0.19 acres

Subdivision Name: Eastside

MLS Area Major: 51 - Peninsula Charleston Inside of Crosstown

Date added: Added 7 months ago

Status: Active

Area, sq ft: 6807 sq ft

Year built: 1850

County Or Parish: Charleston

Building Details

Number Of Units Total: 3

Parking Features: Other

Roof: Asphalt

Stories: 3

Construction Materials: See Remarks

Amenities & Features

Water Source: Public

Cooling Yes/ No: 1

Heating: Central

Sewer: Public Sewer

Cooling: Central Air

Hidden Info

List Office MLS Id: 9472

