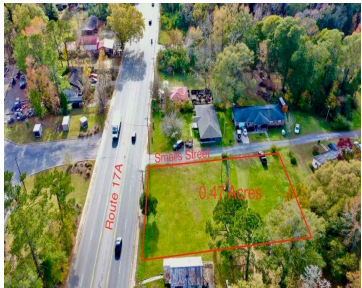


225 S LIVE OAK DR, MONCKS CORNER, SC 29461, USA
https://findyourcharleston.com

225 S Live Oak Dr,
Moncks Corner, SC
29461, USA



Looking for almost Half an acre cleared in Town? This cleared lot with 105 feet of road frontage may just be what you are looking for. Currently zoned R-1. The area currently has Residential & Commercial properties along this busy main corridor of Hwy 17-A/ South Live oak Drive. Property may qualify for Commercial. County [...]

- Land
- Active



Tonya Brinson

Basics



MLS ID: 24001233

Category: Land

Lot size, acres: 0.47 acres

County Or Parish: Berkeley

Date added: Added 7 months ago

Status: Active

Subdivision Name: None

MLS Area Major: 76 - Moncks Corner Above Oakley Rd

Hidden Info

List Office MLS Id: 9084

