

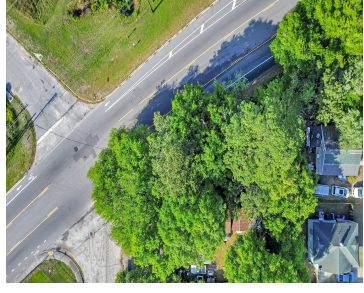
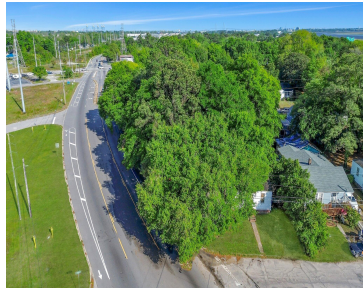
2343 CAMBRIDGE AVE, NORTH CHARLESTON, SC 29405, USA

<https://findyourcharleston.com>

2343 Cambridge Ave, North Charleston, SC 29405, USA



\$45,000

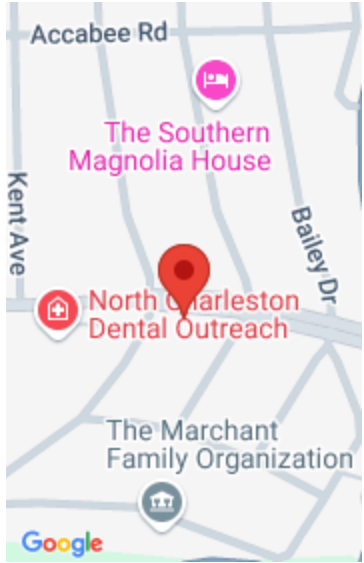


This land has a driveway entry on Azalea (see street photos) and is currently zoned residential. Similar sized lots have been built on nearby and resold or used as residential.

- Land
- Active Contingent



Winnie Rodgers



Basics

MLS ID: 24009426

Category: Land

Lot size, acres: 0.11 acres

County Or Parish: Charleston

Date added: Added 6 months ago

Status: Active Contingent

Subdivision Name: Dorchester Terrace

MLS Area Major: 31 - North Charleston Inside I-526

Hidden Info

List Office MLS Id: 9057

