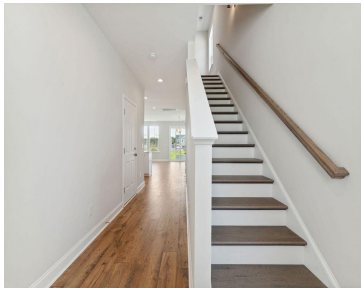


245 CLARET CUP WY, CHARLESTON, SC 29414, USA

<https://findyourcharleston.com>

245 Claret Cup Wy,  
Charleston, SC  
29414, USA



PLANNED COMPLETION THIS OCTOBER! The Rosa plan offers a versatile open layout with a large kitchen island and plenty of storage. Relax in the cavernous primary suite with its walk-out balcony, oversized walk-in closet and impressive tray ceiling. A screened porch, full laundry room, and so much more add to the livability of this fantastic [...]



Bridge Gill

- 3 beds
- 2 baths
- Single Family Attached
- Residential
- Active
- 1766 sq ft



---

# Basics

<b>MLS ID:</b> 24013223	<b>Date added:</b> Added 4 months ago
<b>Category:</b> Residential	<b>Type:</b> Single Family Attached
<b>Status:</b> Active	<b>Bedrooms:</b> 3 beds
<b>Bathrooms:</b> 2 baths	<b>Half baths:</b> 1 half bath
<b>Area, sq ft:</b> 1766 sq ft	<b>Lot size, acres:</b> 0.08 acres
<b>Year built:</b> 2024	<b>Subdivision Name:</b> Verdier Pointe
<b>County Or Parish:</b> Charleston	<b>MLS Area Major:</b> 12 - West of the Ashley Outside I-526

---

# Building Details

<b>Stories:</b> 2	<b>New Construction Yes/ No:</b> 1
<b>Parking Features:</b> 1 Car Garage, Attached, Garage Door Opener	<b>Covered Spaces:</b> 1
<b>Construction Materials:</b> Cement Plank	<b>Garage Spaces:</b> 1
<b>Roof:</b> Architectural, Asphalt	

---

# Amenities & Features

<b>Water Source:</b> Public	<b>Patio &amp; Porch Features:</b> Front Porch, Screened
<b>Sewer:</b> Public Sewer	<b>Exterior Features:</b> Balcony
<b>Cooling Yes/ No:</b> 1	<b>Cooling:</b> Central Air
<b>Attached Garage Yes/ No:</b> 1	<b>Interior Features:</b> Ceiling - Smooth, Tray Ceiling(s), High Ceilings, Kitchen Island, Walk-In Closet(s), Eat-in Kitchen, Family, Entrance Foyer
<b>Heating:</b> Forced Air	<b>Flooring:</b> Ceramic Tile

---

# Hidden Info

**List Office MLS Id:** 8085

