

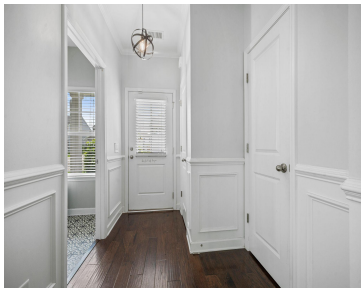
259 WEEPING CYPRESS DR, MONCKS CORNER, SC
29461, USA

<https://findyourcharleston.com>

259 Weeping
Cypress Dr, Moncks
Corner, SC 29461,
USA



\$385,000



Discover comfort and style in this beautifully maintained home, tucked away in an intimate, boutique-sized community. Featuring an open and inviting floor plan, this spacious residence offers four bedrooms and two and a half bathrooms, perfectly suited for modern living. The welcoming living room centers around a cozy fireplace, ideal for unwinding after a long [...]



Dixie O'toole

- 4 beds
- 2 baths
- Single Family Detached
- Residential
- Active
- 2250 sq ft



Basics



MLS ID: 25012363

Category: Residential

Status: Active

Bathrooms: 2 baths

Area, sq ft: 2250 sq ft

Year built: 2017

County Or Parish: Berkeley

Date added: Added 7 months ago

Type: Single Family Detached

Bedrooms: 4 beds

Half baths: 0 half baths

Lot size, acres: 0.14 acres

Subdivision Name: Cypress Grove

MLS Area Major: 73 - G. Cr./M. Cor. Hwy 17A-Oakley-Hwy 52

Building Details

Stories: 2

Entry Location: Ground Level

Construction Materials: Stone Veneer, Vinyl Siding

Roof: Fiberglass

Parking Features: 2 Car Garage

Covered Spaces: 2

Garage Spaces: 2

Amenities & Features

Water Source: Public

Architectural Style: Traditional

Cooling Yes/ No: 1

Cooling: Central Air

Heating: Central

Fireplace Features: Family Room, One

Patio & Porch Features: Front Porch

Sewer: Public Sewer

Window Features: Window Treatments - Some

Interior Features: Ceiling - Smooth, Walk-In Closet(s), Ceiling Fan(s), Family, Loft, Pantry

Flooring: Carpet, Ceramic Tile, Luxury Vinyl

Hidden Info

List Office MLS Id: 9672

