

QPC9+CG RAVENEL, SC, USA

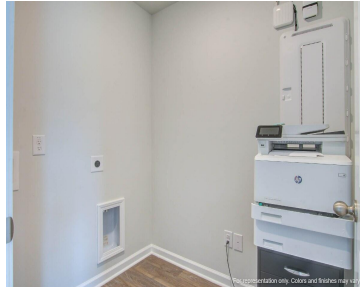
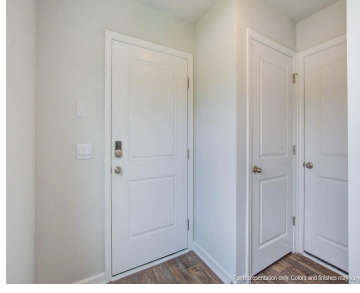
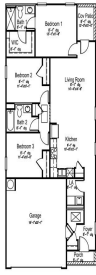
<https://findyourcharleston.com>

QPC9+CG Ravenel, SC, USA



\$311,900

DOWNING

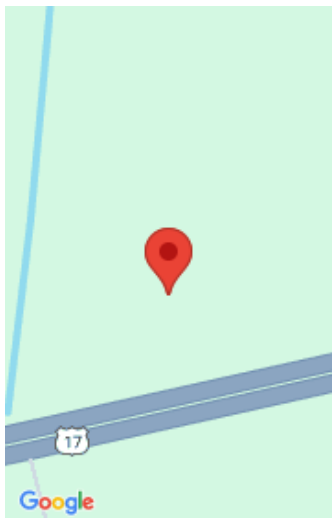


READY THIS FALL! This homesite is back-to-back with an adjacent home. Hillcrest is tucked away in a quiet, true Lowcountry environment, tucked away from the hustle and bustle of the city. Conveniently located off Highway 17, this community gives direct access to everything that makes Charleston such a great place to live! Here you are, [...]



Katie Stevens Grout

- 3 beds
- 2 baths
- Single Family Detached
- Residential
- Active Contingent
- 1257 sq ft



Basics

MLS ID: 24013756

Category: Residential

Status: Active Contingent

Bathrooms: 2 baths

Lot size, acres: 0.14 acres

Subdivision Name: Hillcrest

MLS Area Major: 13 - West of the Ashley beyond Rantowles Creek

Date added: Added 6 months ago

Type: Single Family Detached

Bedrooms: 3 beds

Area, sq ft: 1257 sq ft

Year built: 2024

County Or Parish: Charleston

Building Details

Stories: 1

Parking Features: 2 Car Garage

Construction Materials: Cement Plank

Roof: Fiberglass

New Construction Yes/ No: 1

Covered Spaces: 2

Garage Spaces: 2

Amenities & Features

Water Source: Public

Architectural Style: Traditional

Cooling Yes/ No: 1

Window Features: Thermal Windows/Doors, ENERGY STAR Qualified Windows

Interior Features: Ceiling - Smooth, Kitchen Island, Walk-In Closet(s), Eat-in Kitchen, Family, Living/Dining Combo, Pantry

Flooring: Vinyl

Patio & Porch Features: Patio

Sewer: Public Sewer

Waterfront Features: Pond Site

Cooling: Central Air

Heating: Electric

Hidden Info



