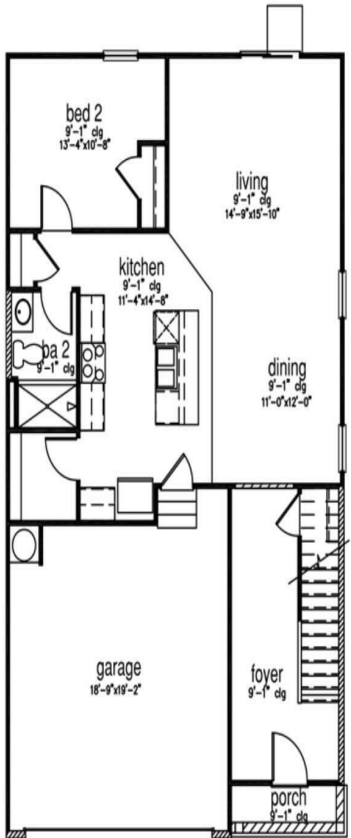


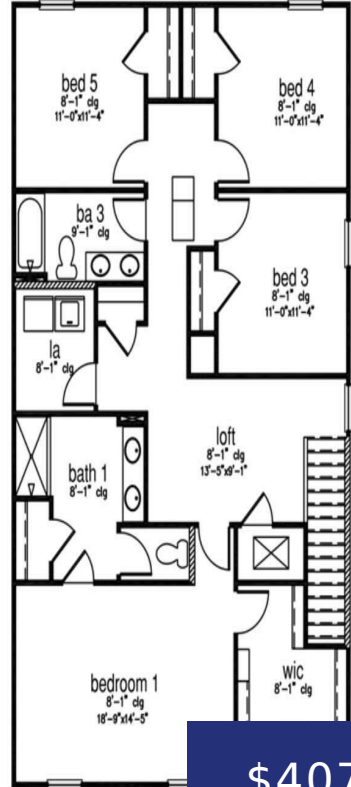
QPC9+FW RAVENEL, SC, USA

<https://findyourcharleston.com>

QPC9+FW Ravenel, SC, USA

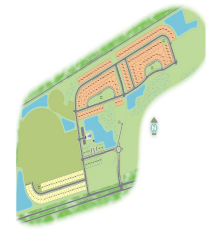


First Floor



Second Floor

\$407,400

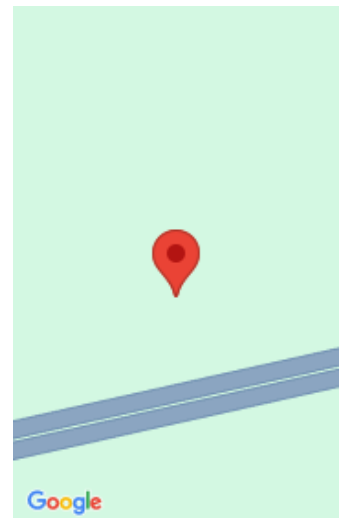


READY THIS FALL! This homesite offers a wooded lot. Hillcrest is tucked away in a quiet, true Lowcountry environment, tucked away from the hustle and bustle of the city. Conveniently located off Highway 17, this community gives direct access to everything that makes Charleston such a great place to live! Here you are, just 15 [...]



Katie Stevens Grout

- 5 beds
- 3 baths
- Single Family Detached
- Residential
- Active Contingent
- 2361 sq ft



Google



Basics

MLS ID: 24013766

Category: Residential

Status: Active Contingent

Bathrooms: 3 baths

Lot size, acres: 0.14 acres

Subdivision Name: Hillcrest

MLS Area Major: 13 - West of the Ashley beyond Rantowles Creek

Date added: Added 7 months ago

Type: Single Family Detached

Bedrooms: 5 beds

Area, sq ft: 2361 sq ft

Year built: 2024

County Or Parish: Charleston

Building Details

Stories: 2

Parking Features: 2 Car Garage

Construction Materials: Cement Plank

Roof: Fiberglass

New Construction Yes/ No: 1

Covered Spaces: 2

Garage Spaces: 2

Amenities & Features

Water Source: Public

Patio & Porch Features: Patio

Architectural Style: Traditional

Sewer: Public Sewer

Exterior Features: Stoop

Cooling Yes/ No: 1

Waterfront Features: Pond Site

Window Features: Window Treatments

Cooling: Central Air

Interior Features: Ceiling - Smooth, Kitchen Island, Walk-In Closet(s), Bonus, Eat-in Kitchen, Family, Entrance Foyer, Living/Dining Combo, Pantry

Heating: Electric

Flooring: Vinyl

Hidden Info



