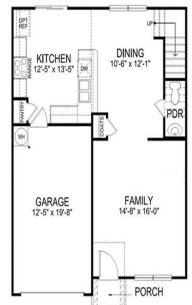
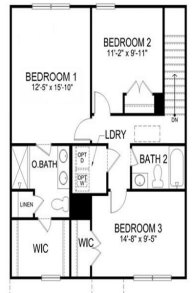


The Brandon



First Floor



Second Floor

*Square foot dimensions are approximate. Home and community information, including pricing, included features, items, availability and amenities, are subject to change and prior sale at any time without notice or obligation. Pictures, photographs, features, colors and sizes are approximate for illustrative purposes only and will vary from the homes as built. Please see an Express Homes Sales Representative for more information. Express Homes Copyright © 2018. Rev. 10/2020 JDSF 1518

\$372,900

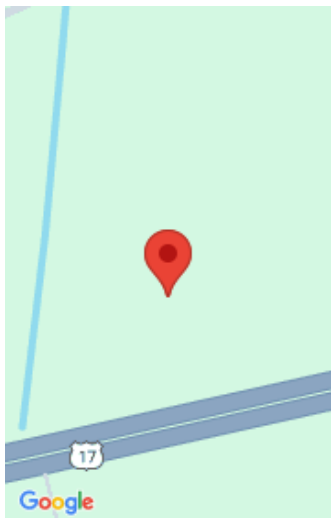


READY THIS FALL! This homesite offers a pond view. Hillcrest is tucked away in a quiet, true Lowcountry environment, tucked away from the hustle and bustle of the city. Conveniently located off Highway 17, this community gives direct access to everything that makes Charleston such a great place to live! Here you are, just 15 [...]

- 3 beds
- 2 baths
- Single Family Detached
- Residential
- Active Contingent
- 1518 sq ft



Katie Stevens Grout



Basics

MLS ID: 24013780 **Date added:** Added 6 months ago
Category: Residential **Type:** Single Family Detached
Status: Active Contingent **Bedrooms:** 3 beds
Bathrooms: 2 baths **Half baths:** 1 half bath
Area, sq ft: 1518 sq ft **Lot size, acres:** 0.14 acres
Year built: 2024 **Subdivision Name:** Hillcrest
County Or Parish: Charleston **MLS Area Major:** 13 - West of the Ashley beyond Rantowles Creek

Building Details

Stories: 2 **New Construction Yes/ No:** 1
Parking Features: 1 Car Garage **Covered Spaces:** 1
Construction Materials: Cement Plank **Garage Spaces:** 1
Roof: Fiberglass

Amenities & Features

Water Source: Public **Patio & Porch Features:** Patio
Architectural Style: Traditional **Sewer:** Public Sewer
Exterior Features: Stoop **Cooling Yes/ No:** 1
Waterfront Features: Pond Site **Window Features:** Window Treatments
Cooling: Central Air **Interior Features:** Ceiling - Smooth, Kitchen Island, Walk-In Closet(s), Bonus, Eat-in Kitchen, Family, Entrance Foyer, Living/Dining Combo, Pantry
Heating: Electric **Flooring:** Vinyl

Hidden Info



