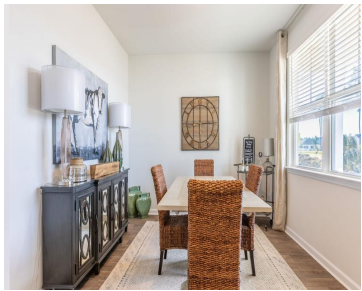


567 LK RDG BLVD, MONCKS CORNER, SC 29461, USA

<https://findyourcharleston.com>

567 Lk Rdg Blvd,
Moncks Corner, SC
29461, USA



Pine Hills in Cane Bay, Summerville, South Carolina, offers a serene suburban lifestyle. Nestled amidst lush landscapes, it features elegant homes, friendly neighbors, and excellent schools. Residents enjoy nearby parks, shopping, and dining, making it a family-friendly haven with a charming. Southern atmosphere. Amenities include 3 pools, with a 2-story water slide. Nearby is the [...]

- 5 beds
- 3 baths
- Single Family Detached
- Residential
- Active
- 2632 sq ft



Katie Stevens Grout



Basics



MLS ID: 25016035

Category: Residential

Status: Active

Bathrooms: 3 baths

Area, sq ft: 2632 sq ft

Year built: 2025

County Or Parish: Berkeley

Date added: Added 8 months ago

Type: Single Family Detached

Bedrooms: 5 beds

Half baths: 1 half bath

Lot size, acres: 0.15 acres

Subdivision Name: Cane Bay Plantation

MLS Area Major: 74 - Summerville, Ladson, Berkeley Cty

Building Details

Stories: 2

Parking Features: 2 Car Garage

Construction Materials: Vinyl Siding

Roof: Fiberglass

New Construction Yes/ No: 1

Covered Spaces: 2

Garage Spaces: 2

Amenities & Features

Water Source: Public

Architectural Style: Traditional

Exterior Features: Stoop

Waterfront Features: Pond Site

Cooling: Central Air

Heating: Natural Gas

Patio & Porch Features: Patio, Porch

Sewer: Public Sewer

Cooling Yes/ No: 1

Window Features: Window Treatments

Interior Features: Ceiling - Smooth, Kitchen Island, Walk-In Closet(s), Eat-in Kitchen, Family, Entrance Foyer, Living/Dining Combo, Loft, Pantry

Flooring: Carpet, Vinyl

Hidden Info

List Office MLS Id: 1429

