

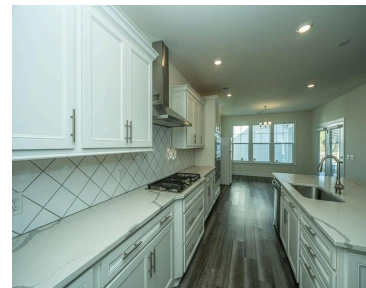
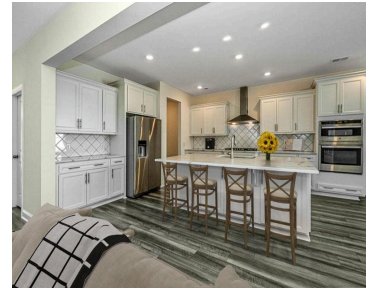
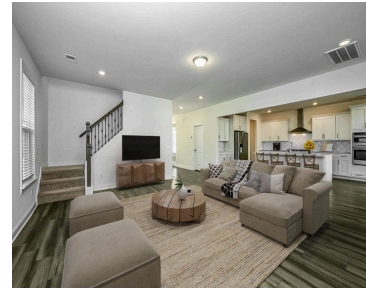
354 Parish Farms  
Dr, Summerville, SC  
29486, USA

# 354 PARISH FARMS DR, SUMMERVILLE, SC 29486, USA

<https://findyourcharleston.com>



\$580,000



- 6 beds
- 4 baths
- Single Family Detached
- Residential
- Active
- 3402 sq ft

Looking for the perfect home to accommodate homeschooling, working from home, or multi-generational living? This spacious 6-bedroom, 4.5-bathroom home offers endless possibilities! Step inside and discover the generous and open spaces that await you. The first floor features a guest suite with a full bath, ideal for visitors or in law suite. Additionally, there's an office/flex [...]



**Kathryn Poe**



---

## Basics

**MLS ID:** 24009835

**Date added:** Added 1 month ago

**Category:** Residential

**Type:** Single Family Detached

**Status:** Active

**Bedrooms:** 6 beds

**Bathrooms:** 4 baths

**Half baths:** 0 half baths

**Area, sq ft:** 3402 sq ft

**Lot size, acres:** 0.16 acres

**Year built:** 2021

**Subdivision Name:** Carnes Crossroads

**County Or Parish:** Berkeley **MLS Area Major:** 74 - Summerville, Ladson, Berkeley Cty

---

## Building Details

**Stories:** 2

**Parking Features:** 2 Car Garage, Detached

**Covered Spaces:** 2

**Construction Materials:** Cement Plank

**Garage Spaces:** 2

---

## Amenities & Features

**Water Source:** Public

**Patio & Porch Features:** Covered, Front Porch

**Architectural Style:**  
Traditional

**Sewer:** Public Sewer

**Cooling Yes/ No:** 1

**Window Features:** Window Treatments

**Cooling:** Central Air

**Interior Features:** Ceiling - Smooth, High Ceilings, Garden Tub/Shower, Kitchen Island, Walk-In Closet(s), Bonus, Eat-in Kitchen, Family, Formal Living, Entrance Foyer, Media, In-Law Floorplan, Office, Pantry

---

## Hidden Info

**List Office MLS Id:** 1279

