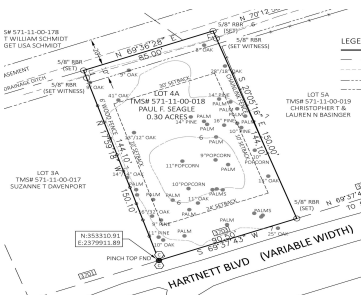
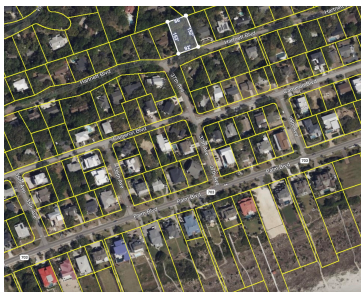


3703 HARTNETT BLVD, ISLE OF PALMS, SC 29451, USA

<https://findyourcharleston.com>

3703 Hartnett Blvd,
Isle of Palms, SC
29451, USA



Large lot 2 blocks from the beach straight on the corner of 37th Ave and Hartnett Blvd. This Lot is also listed as a new construction home on MLS # 24025185. You can build over 5000 sq. ft on this lot. There are four large live oak trees on the corners which frame the property. [...]

- Land
- Active



Oliver Caminos

Basics



MLS ID: 25006206

Category: Land

Lot size, acres: 0.3 acres

County Or Parish: Charleston

Date added: Added 9 months ago

Status: Active

Subdivision Name: Forest Trail

MLS Area Major: 44 - Isle of Palms

Amenities & Features

Sewer: Sewer At Site

Waterfront Features: Beach Access

Hidden Info

List Office MLS Id: 9750

