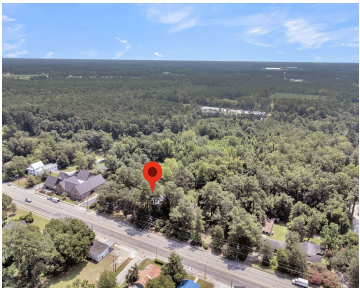
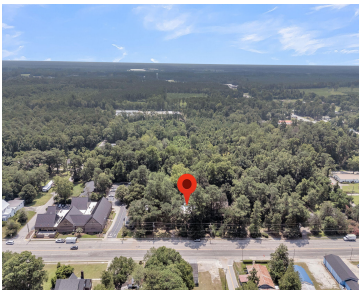


500 N PARLER AVE, ST GEORGE, SC 29477, USA

https://findyourcharleston.com

500 N Parler Ave, St
George, SC 29477,
USA



Three parcels of land, totaling 8.69 acres, with over 1,100 feet of frontage on three streets, including Main Street. Multiple access points to all 3 parcels, and currently zoned RMU/Residential Mixed Use with the possibility of re-zoning. Front parcel includes a 3000 sq foot home that is gutted with a new roof.

- Land
- Active



Troy Phillips

Basics



MLS ID: 25019039

Category: Land

Lot size, acres: 8.69 acres

County Or Parish: Dorchester

Date added: Added 5 months ago

Status: Active

Subdivision Name: None

MLS Area Major: 64 - St. George, Harleyville, Reevesville, Dorchester

Amenities & Features

Sewer: Sewer At Site

Hidden Info

List Office MLS Id: 1068

