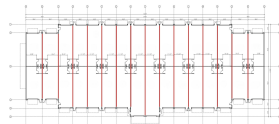
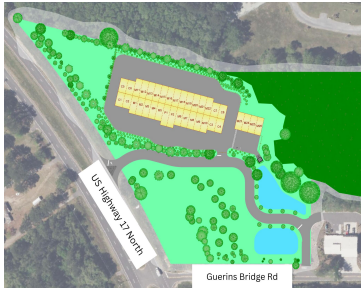
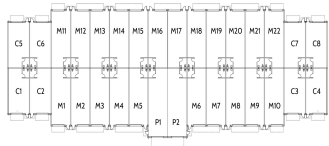


5030 US-17, AWENDAW, SC 29429, USA

https://findyourcharleston.com

5030 US-17,
Awendaw, SC
29429, USA



LIMITED TIME PRE-SALE PRICING***1000 sqft *** Getaway Garage is a Luxury Garage Suite Condo community that specializes in high-end vehicle/toy storage and customized spaces for owners. Our facility offers secure and accessible storage solutions, customizable to include loft areas and flexible floor plans to meet your unique needs. Whether you're looking to safeguard your prized [...]

- 0 beds
- 0 baths
- Other
- Residential
- Active
- 1000 sq ft



Liz Scheidegg

Basics



MLS ID: 25001221

Category: Residential

Status: Active

Bathrooms: 0 baths

Area, sq ft: 1000 sq ft

Year built: 2025

County Or Parish: Charleston

Date added: Added 9 months ago

Type: Other

Bedrooms: 0 beds

Half baths: 1 half bath

Lot size, acres: 10.6 acres

Subdivision Name: None

MLS Area Major: 47 - Awendaw/McClellanville

Building Details

Stories: 1

Entry Location: Ground Level

Parking Features: Parking Space, Other

Construction Materials: See Remarks

Amenities & Features

Water Source: Public

Sewer: Septic Tank

Cooling Yes/ No: 1

Interior Features: Ceiling - Cathedral/Vaulted, High Ceilings

Heating: Ductless

Flooring: Concrete

Hidden Info

List Office MLS Id: 8050

