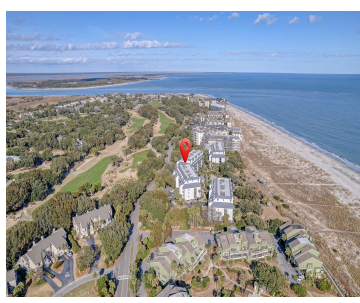
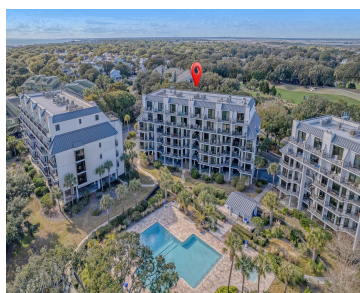
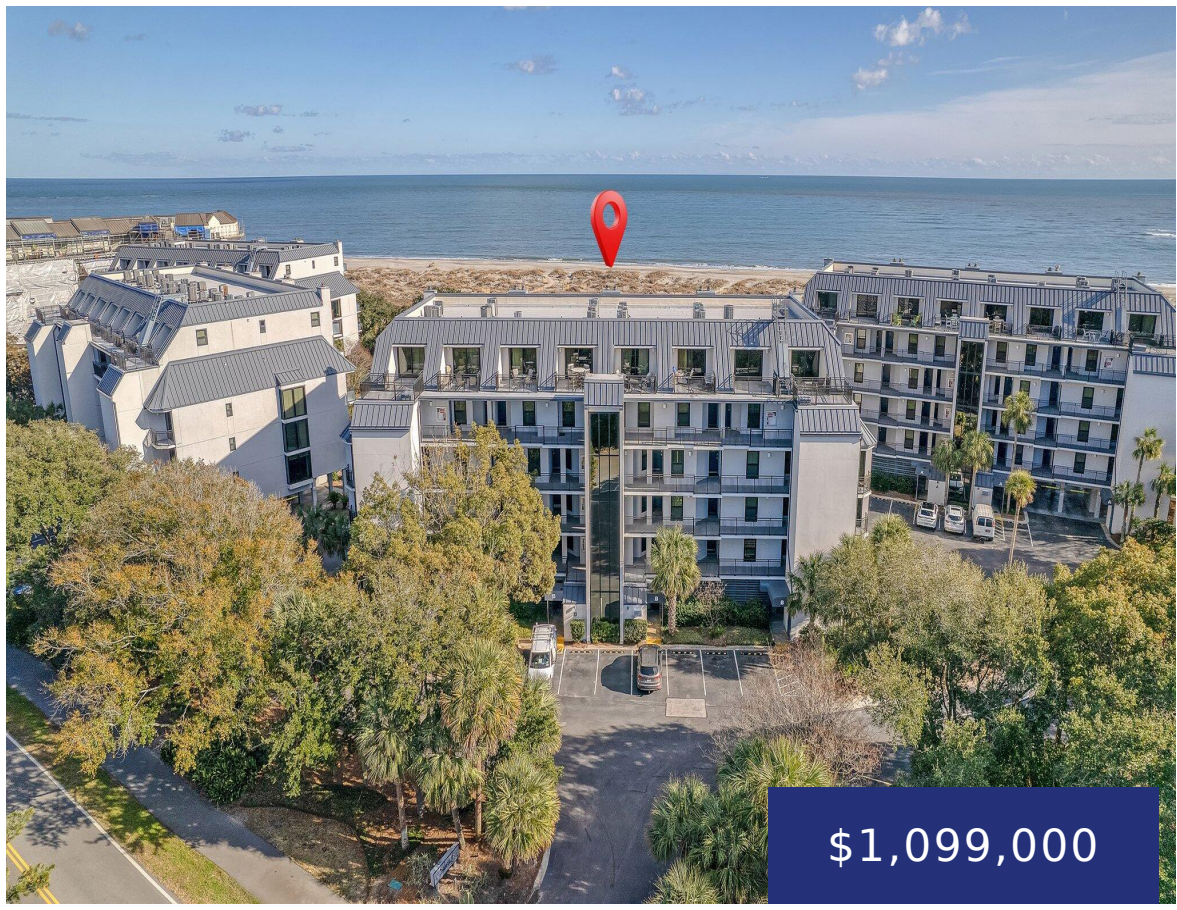


7600 PALMETTO DR, ISLE OF PALMS, SC 29451, USA

<https://findyourcharleston.com>

7600 Palmetto Dr,
Isle of Palms, SC
29451, USA



\$1,099,000

Investment opportunity or resort living in Shipwatch!! Sun-drenched oceanfront condo now available in exclusive Wild Dunes. This prestigious gated community offers it all! Enjoy golf, tennis, pickleball, jogging trails, an on-sight beachfront gazebo and play park. Stunning views of both the ocean and top-rated pool from its generous balcony. Well-designed and meticulously maintained, this 2 [...]

- 2 beds
- 2 baths
- Single Family Attached
- Residential
- Active
- 1084 sq ft



Bobbie Rose



Basics

MLS ID: 24001026

Category: Residential

Status: Active

Bathrooms: 2 baths

Lot size, acres: 0 acres

Subdivision Name: Wild Dunes

MLS Area Major: 45 - Wild Dunes

Date added: Added 6 months ago

Type: Single Family Attached

Bedrooms: 2 beds

Area, sq ft: 1084 sq ft

Year built: 1984

County Or Parish: Charleston

Building Details

Stories: 4

Parking Features: Off Street

Construction Materials: Stucco

Amenities & Features

Water Source: Public

Pool Features: In Ground

Exterior Features: Balcony

Waterfront Features: Beach Access,
Beach Front

Cooling: Central Air

Heating: Heat Pump

Patio & Porch Features: Deck

Sewer: Public Sewer

Cooling Yes/ No: 1

Window Features: Window Treatments

Interior Features: Ceiling - Smooth, High Ceilings,
Kitchen Island, Walk-In Closet(s), Entrance Foyer,
Living/Dining Combo

Flooring: Ceramic Tile, Laminate

Hidden Info

List Office MLS Id: 9057

