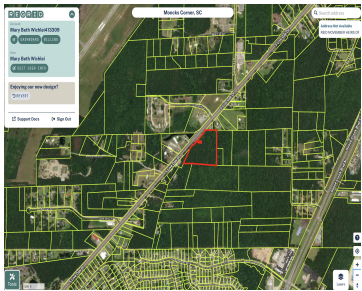


826 S LIVE OAK DR, MONCKS CORNER, SC 29461, USA
https://findyourcharleston.com

826 S Live Oak Dr,
Moncks Corner, SC
29461, USA



Surrounded by residential development, this property is ideally located just 5 miles from Cane Bay and 3 miles from Downtown Moncks Corner, offering convenient access to local restaurants, shopping, and amenities. Moncks Corner has experienced significant population growth, with an increase from 13,307 residents in 2020 to 16,621 in 2023—a 24.9% growth rate, according to the [...]

- Land
- Active



Mary Beth Wichlei

Basics



MLS ID: 25007905

Category: Land

Lot size, acres: 9 acres

County Or Parish: Berkeley

Date added: Added 9 months ago

Status: Active

Subdivision Name: Highways 17-A / Old 52 / New 52

MLS Area Major: 76 - Moncks Corner Above Oakley Rd

Hidden Info

List Office MLS Id: 10239

