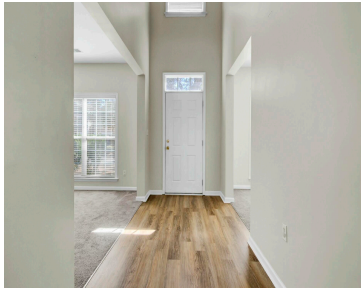
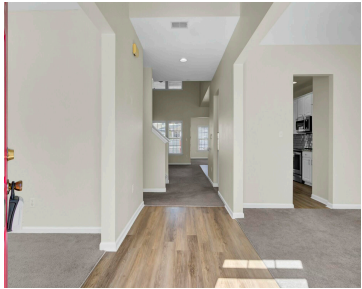


9620 PEBBLE CREEK BLVD, SUMMERVILLE, SC 29485, USA

<https://findyourcharleston.com>

9620 Pebble Creek Blvd, Summerville, SC 29485, USA



***ASSUMABLE VA LOAN AT 3.75% INTEREST RATE!**This spacious 5-bedroom home with two master suites designed for comfort and flexibility. The open floor plan includes a formal dining room, private office, and a bright family room with a cozy fireplace and large windows. The upgraded kitchen features new appliances, modern countertops, and a breakfast bar. The downstairs [...]

- 5 beds
- 3 baths
- Single Family Detached
- Residential
- Active
- 2863 sq ft



Eric Mcfadden

Basics



MLS ID: 25004843

Category: Residential

Status: Active

Bathrooms: 3 baths

Area, sq ft: 2863 sq ft

Year built: 2005

County Or Parish: Dorchester

Date added: Added 7 months ago

Type: Single Family Detached

Bedrooms: 5 beds

Half baths: 1 half bath

Lot size, acres: 0.19 acres

Subdivision Name: Wescott Plantation

MLS Area Major: 61 - N. Chas/Summerville/Ladson-Dor

Building Details

Stories: 2

Covered Spaces: 2

Garage Spaces: 2

Parking Features: 2 Car Garage

Construction Materials: Vinyl Siding

Roof: Fiberglass

Amenities & Features

Water Source: Public

Architectural Style: Traditional

Exterior Features: Rain Gutters, Stoop

Window Features: Thermal Windows/Doors

Heating: Electric, Heat Pump

Fencing: Privacy

Patio & Porch Features: Patio, Porch

Sewer: Public Sewer

Cooling Yes/ No: 1

Interior Features: Ceiling - Smooth, Tray Ceiling(s), High Ceilings, Walk-In Closet(s), Ceiling Fan(s), Eat-in Kitchen, Family, Office, Pantry, Separate Dining

Flooring: Carpet, Luxury Vinyl

Hidden Info

List Office MLS Id: 9636

